

New from ADC

Diagnostix™ PMV™ Otoscope

ADC's new Diagnostix PMV Otoscope uses advanced optical technology to create a panoramic, magnified view that features twice the field of vision and 66% greater magnification (11 mm field of view, 5X magnification) compared to our standard otoscope.

- Significantly improved view of the auditory canal and tympanic membrane
- Fiber-optic light transmission for an unobstructed view
- Choose from halogen/xenon or high-performance LED illumination (4,200 Kelvin, CRI = 92)
- Reflection-optimized, high-performance glass optics
- Adjustable focal depth
- Suitable for throat illumination and pneumatic otoscopy (insufflator sold separately)
- Compatible with Welch Alllyn specula
- Anti-theft locking feature is standard
- Two-year warranty of instrument head, lifetime warranty on LED lamp
- Instrument head made in Germany, Diagnostix sets inspected, assembled, and packaged in the U.S.A.

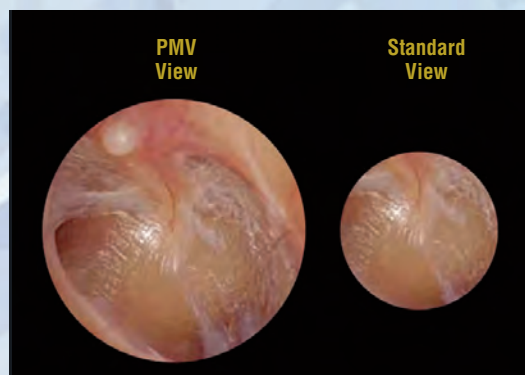


The Diagnostix PMV otoscope head can be used with ADC's 5460, 5560, and 5660 handles as part of our portable, desk, and wall-mount instruments and sets – more than 600 options in all. (See the enclosed price list.) The universal bayonet mount is also compatible with other brands of 3.5V handles.

Technical Data*

	Diagnostix PMV ADC Item #5422	Standard Otoscope ADC Item #5420
Field of View, Ø	11 mm	5.5 mm
Magnification	5X	3X

* At a distance of 15 mm (0.59 in) between landmark and distal tip of specula



Available Now
www.adctoday.com/products/5422

55 Commerce Drive
Hauppauge, New York 11788
Tel: 1-800-ADC-2670
Fax: 631-273-9659
www.adctoday.com

ADC
AMERICAN DIAGNOSTIC CORPORATION