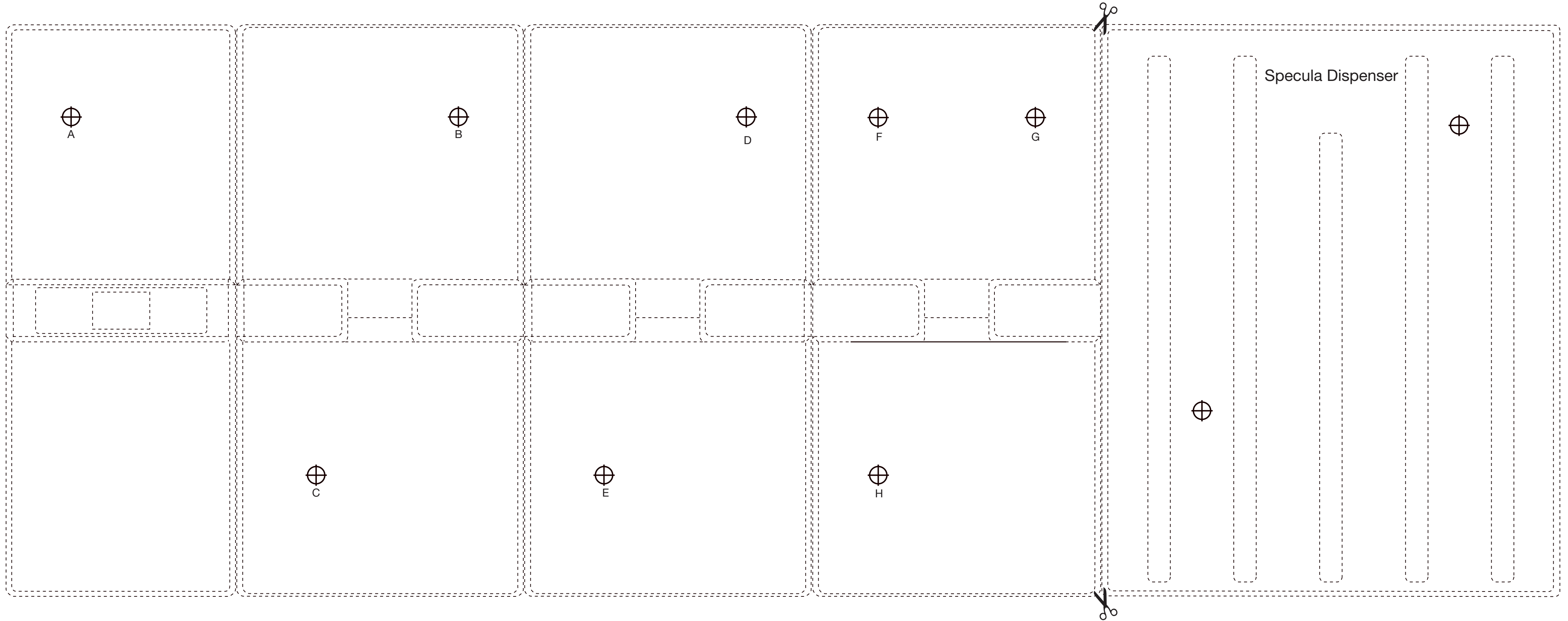


# Wall Drilling Template and Installation Instructions



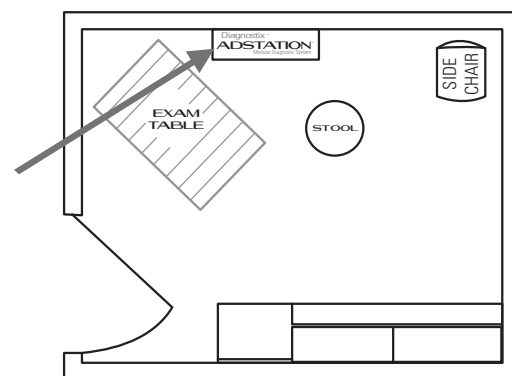
## Getting Started

These instructions and drilling template will help you mount your Adstation EENT instruments directly on an exam room wall. All screws, anchors, and cables are included in the package.

**WARNING:** ADC is not responsible for the integrity of any mounting installation. We recommend following mounting instructions and working with your maintenance service to ensure professional, safe, and reliable installation.

### Choose a Location

Choose a location for your ADC Diagnostix Adstation near the examination table and an electrical outlet.



## Using the Drilling Template

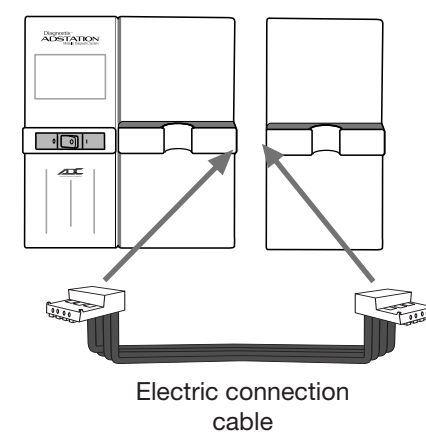
1. Cut out the Specula Dispenser portion of the drilling template and set aside. Tape the remaining drilling plan to the wall where needed. Please ensure the height suits your practice before you begin to drill.
2. With a pencil, mark holes on the wall for the transformer/handle unit (labeled ⊕ A, B, C).
3. Holes for up to two additional extension modules (labeled ⊕ D, E and ⊕ F, G, H) are also shown. Mark the corresponding holes for each extension module being added.
4. Remove the template from the wall.

## Installing Mounting Plates

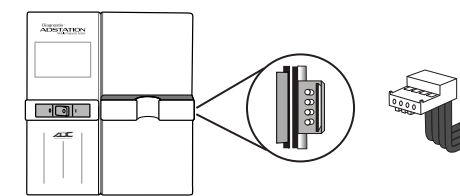
1. Using a 7/32" bit, drill all holes, about 1/4" deep.
2. Push the supplied anchors into the holes until flush with outer wall.
3. Position transformer wall plate over its anchors, insert screws, and tighten.
4. Repeat Step 3 for additional module mounting plates.

## Installing Transformer and Extension Modules

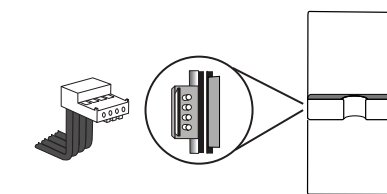
1. Position the transformer over the mounting plate screws and guide the screw heads into the keyhole openings.
2. Slide the transformer down to lock securely in place.
3. Join the main transformer and extension module using electric connection cable.



Plug one end of the enclosed connection cable into the transformer module socket. Ensure the four contacts on the cable plug are fully connected to the four pins on the transformer socket.



Plug the other end of the enclosed connection cable into the extension module socket. Ensure the four contacts on the cable plug are fully connected to the four pins on the extension socket.



4. Tuck excess wiring into the frame of the extension module to allow for a close side-by-side fit between the modules.  
*Tuck excess cable here*  
*Sides of both modules should be flush*
5. Position the extension module over the mounting plate screws and guiding the screw heads into the keyhole openings.
6. Slide module down to lock securely in place.

**Repeat Steps 3-6 as needed for additional extension modules.**

## Adding a Specula Dispenser (Optional)

1. Tape the specula dispenser drilling template on the wall where desired.
2. With a pencil, mark two holes on the wall where indicated, then remove template from the wall.
3. Using a 7/32" bit, drill holes where marked, about 1/4" deep.
4. Push the supplied screw anchors into the holes until flush against the wall.
5. Take the dispenser portion of the unit and confirm the spacer caps are in place on the back.
6. Push the two supplied screws into the holes on the front of the unit and position it on the wall in line with the anchors. Screw snugly into place.
7. Attach the faceplate by aligning the four grooved tracks on the sides with corresponding guides on the dispenser. Push firmly until the faceplate clicks into place.
8. To attach the lid, align the lid tabs with the corresponding holes on the faceplate until the lid rests in position.
9. Fill the dispenser as needed.

