

Adscope® Stethoscope

Instructions for Use



Thank you for choosing an ADC® ADSCOPE® Stethoscope. Your new stethoscope is designed to provide unsurpassed acoustic sensitivity, unrivaled durability, and unparalleled comfort. Every component has been carefully designed to maximize performance.

These instructions for use are for all Adscope stethoscope models: 600, 601, 602, 603, 604, 605, 606, 608, 612, 614, 615, 618 and 619.

Device Description and Intended Use

This device is intended for medical diagnostic purposes only. It can be used for auscultation of heart, lung, bowel and other body sounds. The device is not designed, sold or intended for use except as indicated.

Symbol Definitions

The following symbols are associated with your stethoscope.

Symbol	Definition	Symbol	Definition
	Important Warning/Caution		Authorized European Representative's Information
	Not made with natural rubber latex		Manufacturer's Information
	Phthalate Free		Date of Manufacture
	Read instructions before use		Lot number
	Follow instructions for use		Medical Device
	Meets the general safety and performance requirements of Regulation (EU) 2017/745 of the European Union		Unique Device Identifier
			Non-Sterile

General Warnings *A warning statement in this manual identifies a condition or practice which, if not corrected or discontinued immediately, could lead to patient injury, illness, or death.*

WARNING: Never use stethoscope without eartips firmly locked in place.

WARNING: Stethoscope contains small parts which may present a choking hazard.

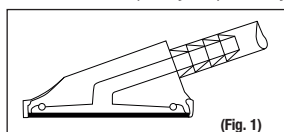
WARNING: Cross-contamination of the stethoscope could cause patient infection. Clean and disinfect stethoscope between uses as described in Cleaning, Disinfection, and Storage.

WARNING: Eartips can be swallowed and cause a choking hazard. Ensure all parts are properly attached and stored.

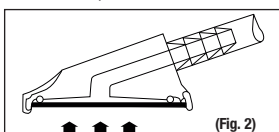
WARNING: Stethoscope tubing can be a strangulation hazard. Keep away from children.

How to Use an Adjustable Frequency Chestpiece (AFD Models - 600, 601, 603, 604, 606, 608, 612, 614, 615, 618 and 619)

Adscopes with AFD technology provide the enhanced acoustic response of a traditional bell and diaphragm. A rubber gasket around the perimeter of the diaphragm allows you to alter the frequency response by changing the contact pressure.



For low-frequency response (bell phase) simply hold the chestpiece in place with light pressure. (Fig. 1)



For high-frequency monitoring (diaphragm phase) apply firm fingertip pressure to the chestpiece. (Fig. 2)

Selection of a Combination Chestpiece (Two-sided models - 601, 602, 603, 604, 605, 606, 608 and 619)

With combination stethoscopes you can select the use of either the diaphragm for monitoring high-frequency sounds, or the open bell for monitoring low-frequency response.

To select a side, hold the chestpiece valve stem in one hand and rotate the chestpiece 180° with the other hand until it “clicks” into place. The stem has an engraved dot, which aligns with the active side.

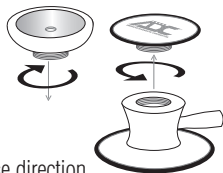
To confirm which side is activated, tap lightly on one side, then the other, to hear which provides the positive response.



Converting the Chestpiece (601, 608 Only)

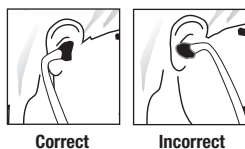
The 601 and 608 chestpiece drums accommodate two different chestpiece attachments. To attach the bell you must first remove the pediatric diaphragm and then thread the bell clockwise until tight.

To remove pediatric diaphragm, twist in a counterclockwise direction.



Orientation of the Headset

The binaurals (ear tubes) are angled at 15° to permit a comfortable, acoustically sealed aural fit. Eartips should point forward, towards the bridge of the nose, to fit properly.

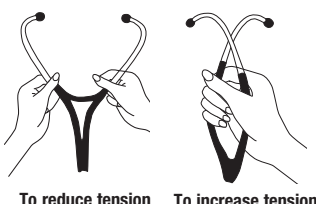


Adjusting the Spring Tension in the Headset

To reduce the tension, grip the binaurals firmly using both hands with fingers at the center of the “Y” in the tubing, thumbs at each side where the tubing branches out. Flex binaurals gradually until the desired tension is obtained.

To increase the tension, grip the binaurals in the hand and squeeze the binaural tubes together gradually.

CAUTION: Excessive adjustment could weaken the spring.

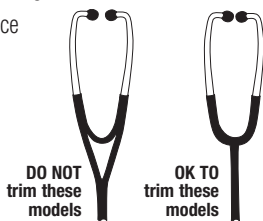


Shortening the Tube Length (Clinician Models ONLY)

Clinician Series Adscopes are equipped with 22" tubing.

If a shorter length is desired, remove the chestpiece from tubing. Cut tubing to desired length with a sharp single-edge razor on a hard surface. To soften tubing, use a hair dryer on a low heat setting for approximately one minute, and reinsert chestpiece stem in tubing.

CAUTION: Allow tubing to cool before using.



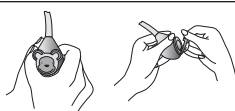
Replacing the Diaphragm

Snap-on (PVC) Rim: Snap off the rim and remove the worn diaphragm. Replace with new diaphragm and reattach rim by gently stretching rim until the chestpiece edge inserts fully in the track within the rim.

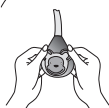


Replacing Faceplates (618 Models)

Removal: Hold the chestpiece with one hand. Pop off the old plate diagonally from behind.



Replace: Position the bottom of the new plate to the socket of the chestpiece. Snap the top firmly into place.



Replacing Eartips

To Replace Adsoft™ Plus Eartips: Slide Adsoft Plus eartip over adapter until it locks tight into internal channel. Repeat steps for second aural tube.



Cleaning, Disinfection, and Storage

- Clean your Adscope between patients using either a 70% isopropyl alcohol solution, 70% isopropyl alcohol wipe, or disposable wipe with soap and water. Be sure to wipe down all surfaces including chestpiece, tubing, headset and eartips.
- The diaphragm, non-chill bell ring, and eartips may be removed for a thorough cleaning if desired. Ensure all parts are thoroughly dry before reassembling. Do not remove chestpiece.
- If storing in original box, the molded tray may also be wiped down to reduce risk of recontamination.
- Avoid extreme heat, cold, solvents or oils.
- Do not leave exposed to direct sunlight for prolonged periods of time.
- Periodically check that eartips are securely affixed to the headset and free from damage.
- Do not immerse stethoscope in any liquid.
- Do not steam sterilize. If sterilization is necessary, gas sterilize only.

LIMITED WARRANTY

Please register your stethoscope online at: <http://www.adctoday.com/register>. ADC warrants its products against defects in materials and workmanship under normal use and service as follows:

1. Warranty service extends to the original retail purchaser only and commences with the date of delivery.
2. Your Adscope stethoscope is warranted for life.

What Is Covered: Replacement of parts and labor.

What Is Not Covered: Transportation charges to ADC. Damages caused by abuse, misuse, accident, or negligence. Incidental, special, or consequential damages. Some states do not allow the exclusion or limitation of incidental, special, or consequential damages, so this limitation may not apply to you.

To Obtain Warranty Service: Send item(s) postage paid to ADC, Attn: Repair Dept., 55 Commerce Dr., Hauppauge, NY 11788. Please include your name and address, phone no., proof of purchase, and a brief note explaining the problem.

Implied Warranty: Any implied warranty shall be limited in duration to the terms of this warranty and in no case beyond the original selling price (except where prohibited by law).

This warranty gives you specific legal rights and you may have other rights which vary from state to state.

For Australian Consumers

Our goods come with guarantees that cannot be excluded under the Australian Consumer Law. You are entitled to a replacement or refund for a major failure and compensation for any other reasonable foreseeable loss or damage. You are also entitled to have the goods repaired or replaced if the goods fail to be of acceptable quality and the failure does not amount to a major failure.

For our European Customers

On request, send to ADC by e-mail (info@adctoday.com), we can send to you this manual on paper form within 7 calendar days at no additional cost to the user.

Our website, <https://www.adctoday.com>, where these instructions for use are available fulfills the requirements of personal data protection, according to Directive 95/46/EC and GDPR on the protection of individuals with regard to the processing of personal data and on the free movement of such data.

Any serious incident that has occurred in relation to this medical device should be reported to ADC and the competent authority of the Member State in which the user and/or patient is established.

To register your product visit us at:
www.adctoday.com/register

This manual is available online in a variety of languages,
follow the links for language options:
www.adctoday.com/care

FOR QUESTIONS, COMMENTS, OR SUGGESTIONS CALL TOLL FREE:

1-800-ADC-2670

OR VISIT: www.adctoday.com/feedback



ADC®
55 Commerce Drive
Hauppauge, NY 11788
U.S.A.

All models are acoustically tested
and inspected in the U.S.A.
All models (except 619) assembled
and packaged in the U.S.A.

Components made in Taiwan



SC Cattus SRL
Aleea Carpati nr.53 Sc. B Ap. 64
Târgu-Mures, România, EU

tel: 631-273-9600
toll free: 1-800-232-2670
fax: 631-273-9659

www.adctoday.com
info@adctoday.com

