

Wallboard Installation Instructions

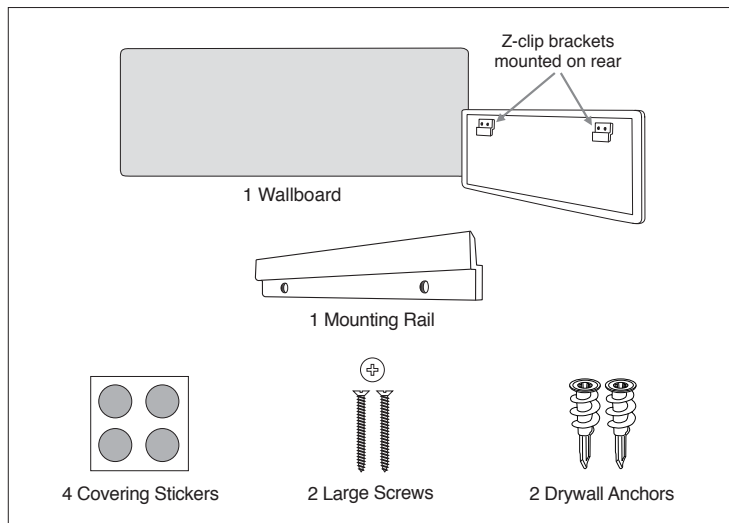


Getting Started

Our Adstation wallboard uses an easy-to-hang Z-clip mount system that consists of a mounting rail, which you will install on the wall, and two hanging brackets, which come attached to the wallboard. All screws and anchors are included, either in the accessory pack or pre-installed on the wallboard.

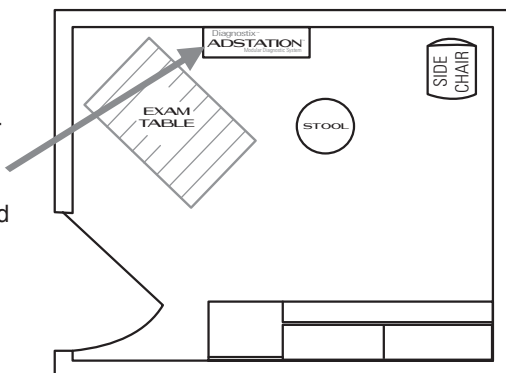
Your package will also include your EENT components, as ordered, and a blood pressure unit and non-contact thermometer, if purchased.

WARNING: ADC is not responsible for the integrity of any mounting installation. We recommend following mounting instructions and working with your maintenance service to ensure professional, safe, and reliable installation.



Choose a Location

Choose a location for your ADC Diagnostix Adstation near the examination table and an electrical outlet.

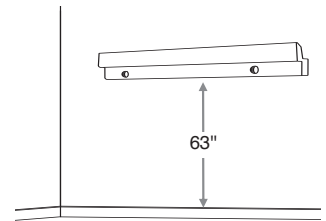


Mount the Rail Bracket

We recommend an installation height of 63" (160 cm) from the floor to the bottom of the rail bracket. This placement keeps instruments accessible and provides for easy readability of blood pressure (if included) regardless of the height of the user.

NOTE: Before permanently mounting any wallboard, please ensure the height suits your practice.

1. Locate the studs and mark at the suggested 63" (160 cm) distance from the floor.
2. Place the bottom of the rail along these marks, check that it is level, and secure to studs with the two wood screws provided. (If studs are not available, install the plastic anchors in the drywall before attaching the rail with the screws.)



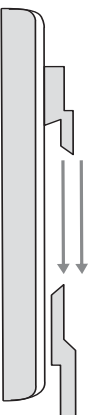
NOTE: The ridged side of the rail faces the wall. This creates the channel on which the wallboard will hang.

Hang the Wallboard

Position the wallboard so the hanging brackets are slightly above the top of the mounting rail.

Slide the wallboard down until both brackets on the board fully engage the channel on the mounting rail.

You're now ready to assemble the instruments for your Adstation

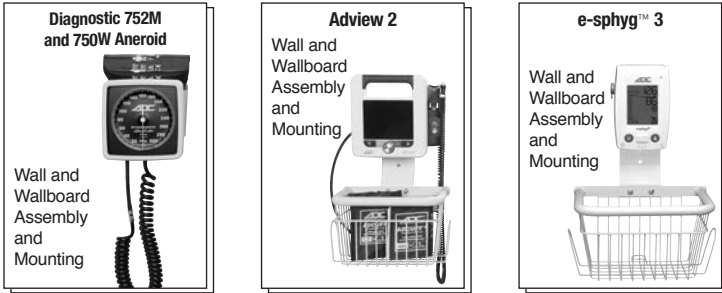


ASSEMBLE THE INSTRUMENTATION

The wallboard ships with some elements, like mounting plates and the specula dispenser, already installed. We recommend building the rest of your Adstation from left to right.

Assemble and Mount Blood Pressure

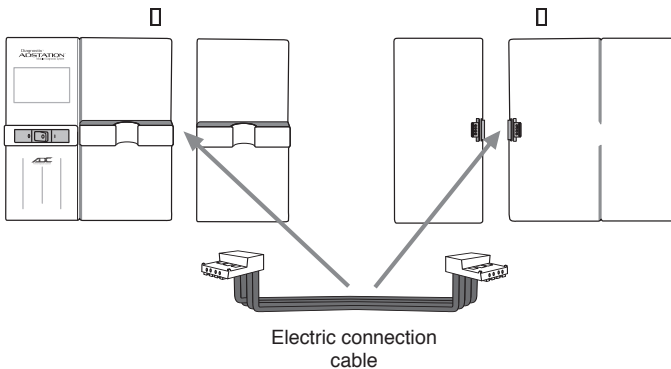
Instructions for adding the blood pressure unit differ by model. Please see the “Wall and Wallboard Assembly and Mounting” section of the insert that’s been included for your configuration.



When your blood pressure unit has been installed, continue below. For diagnostic systems without blood pressure option, cover the unused screw holes with the round stickers provided.

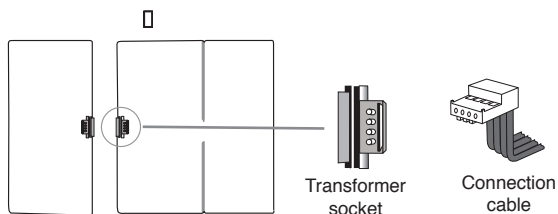
Installing the EENT Instruments

Join the main transformer and extension module electrically before mounting them on the wallboard.

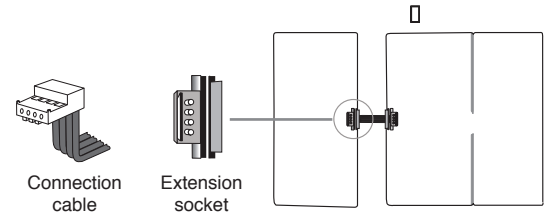


NOTE: If necessary, remove sliding door from the side of the socket channel before starting.

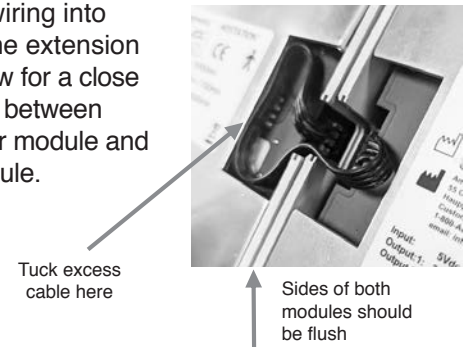
1. Plug one end of the enclosed connection cable into the transformer module socket. Ensure the four contacts on the cable plug are fully connected the four pins on the transformer socket.



2. Plug the other end of the enclosed connection cable into the extension module socket. Ensure the four contacts on the cable plug are fully connected the four pins on the extension socket.



3. Tuck excess wiring into the frame of the extension module to allow for a close side-by-side fit between the transformer module and extension module.



4. After all modules are electrically connected, carefully place the transformer and extension assembly over the mounting plate screws on the wallboard, guiding the screw heads into the keyhole openings.

5. Slide the modules down to lock securely in place.

NOTE: Ensure that the connecting cable does not get caught behind or between the modules when mounting. Reposition the cable in the gap noted in Step 3 if needed.

Attaching the Optional Thermometer

1. If you ordered a non-contact thermometer, attach the acrylic cradle to the two screws on the right side of the board.
2. Slide the thermometer into the cradle as shown.



55 Commerce Drive
Hauppauge, NY 11788
tel: 1-800-232-2670 • fax: 631-273-9659