



ADC[®] Adimals[®] Digital Thermometer Model 426

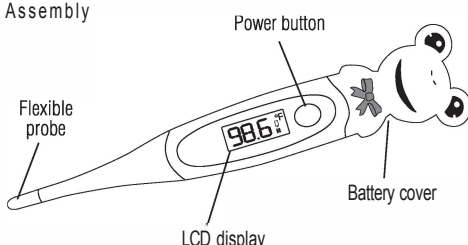
Instructions for Use

Thank you for choosing our Adimals digital thermometer. Your new thermometer is designed to provide accurate body temperature measurements. Our thermometers meet or exceed all relevant international performance standards.

Device Description and Intended Use

A digital thermometer is a device used to measure the body temperature of a patient by means of a transducer coupled with an electric signal amplification, conditioning, and display unit.

Parts and Assembly



Symbol Definitions

The following symbols are associated with your thermometer.

Symbol	Definition
&	Important warning/caution
	Not made with natural rubber latex
	Phthalate free
⚡	Keep dry
O	Operating instructions
II	Type BF applied part
ImI	Lot number

Symbol	Definition
●	Manufacturer's information
	Authorized European representative's information
CE: 2460	Meets essential requirements of European Medical Device Directive 93/42/EEC
It	Dispose in accordance with regulations
...	Low battery indication
IMfi	Medical device

General Warnings *Lh*

A warning statement in this manual identifies a condition or practice which, if not corrected or discontinued immediately, could lead to patient injury, illness, or death. The thermometer is safe for patients and clinicians when used in accordance with the instructions and with the warning and caution statements in this manual. Before using the thermometer, familiarize all operating personnel with the general safety instructions provided in this manual.

WARNING: Use of this device is not intended to be a substitute for consultation with your physician.

WARNING: Avoid taking temperature for 30 minutes after physical exercise, bathing, dining, or drinking hot or cold beverages.

WARNING: High prolonged fever requires medical attention especially for young children. Contact your physician.

WARNING: Do not allow children to walk or run during temperature taking. The probe could present a hazard.

WARNING: Oral, axillary, and rectal temperatures vary by approximately 1° F (0.5° C).

WARNING: Keep battery out of children's reach. Swallowing battery could be harmful.

Battery should not be recharged or placed into extreme heat as it may explode.

CAUTION: Do not boil, bite, bend, drop, or disassemble the thermometer.

CAUTION: Keep thermometer away from direct sunlight, extreme temperatures, or dust.

CAUTION: Do not take axillary temperature through patient's clothing. Direct probe cover to skin contact is required.

CAUTION: Do not autoclave. Please note the cleaning procedures described in this manual.

How to Use

- Place a probe cover carefully over the tip (Figure 1).
- Push the Power button to turn the unit on. The LCD window will briefly display 1ss.s 1 as an internal test. The unit will then briefly display the last read temperature.
- The unit is ready for a temperature reading when --- is displayed.
An --- message in the window indicates your unit is not functioning properly.
The ° F/° C symbol will flash during the duration of the measurement time.
- The unit will beep when the reading is complete in approximately 10 seconds.
If you remove the thermometer early, the LCD will display --- and the unit will beep.
Turn the unit off and back on to take a new reading.
- Push the Power button to turn the unit off. This will prolong the battery life.
If you do not turn the unit off, it will shut off automatically in approximately 1 minute.

Ensuring Accurate Temperature Measurement

We recommend using probe covers with all digital stick thermometers (Figure 1).

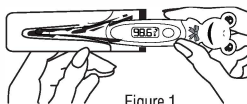


Figure 1

Oral Use (for children 4 years and older):

Place the probe well under the patient's tongue (Figure 2). Keep mouth closed while thermometer is reading. Instruct children not to bite down on the probe. The peak temperature should be reached in approximately 10 seconds, and will make a continuous beeping sound. Opening the mouth or improper placement of the probe tip could result in a longer time for a reading.



Figure 2

Rectal Use

(Commonly used for babies, young children or when it is difficult to take an oral or underarm temperature):

Lubricate the probe cover with a water-soluble jelly for easier insertion; do not use petroleum jelly, as it may cause an inaccurate reading. Gently insert the tip of the probe no more than a 1/2 inch into the rectum. The peak temperature should be reached in approximately 10 seconds, and will make a continuous beeping sound.

STOP if you meet any resistance. The sensing unit is on the very tip of the probe and there is no need to insert the probe deep into the rectum. Dispose of the used probe cover and clean the thermometer as recommended.

Underarm (Axillary) Use:

Wipe armpit with a dry towel. Place the probe in the patient's armpit (Figure 3) and keep the patient's arm pressed firmly against the body. The time required for an accurate underarm temperature may be 10 seconds or longer depending on placement of the probe and closure of the arm against the body.

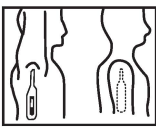


Figure 3

How to Change the Measurement Scale

1. Turn the unit off.
2. Hold Power until the LCD displays either C [:::] or F [:::].
3. Push the Power button to switch between °F and °C. After two seconds, the unit will set to the currently displayed scale. When [:::] is displayed, the unit is ready to take a temperature.

Replacing the Battery

1. When the unit displays " _ ", the battery needs to be replaced.
2. With the unit off, carefully unscrew the battery cover, slide it off, and remove the old battery (Figure 4).
3. Insert a new LR41 battery with the "+" symbol facing back of thermometer.
4. Replace the battery cover before turning unit back on.

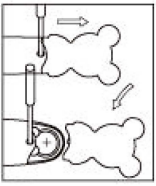


Figure 4

Error Indications

The measured temperature is above 109.4 °F (43 °C), LCD displays "Hi."
Retake temperature using proper technique.

The measured temperature is below 89.6 °F (32 °C), LCD displays "Lo."
Retake temperature using proper technique.

The battery needs to be replaced.

The thermometer was removed before a temperature was taken.
Retake temperature.

There is a problem with the thermometer. Please contact your retailer.

Cleaning and Disinfecting

Do not use corrosive detergent to clean the unit.

Clean and disinfect the thermometer before and after each use.

Cleaning Process

- Use of probe covers is recommended to help avoid spreading germs, and to keep the thermometer clean. The thermometer should be cleaned after use even when probe covers are used.
- Wipe probe with a cloth dipped in a disinfectant solution such as 70% isopropyl (rubbing) alcohol or soap and water.
- Rinse off disinfectant residue.

Care and Storage

- Do NOT drop or crush; this device is not shock proof.
- Do NOT dismantle or modify device.
- Do NOT store the device in an extreme environment with direct sunlight or high temperatures.
- Store the unit in the protective case while not in use.

Standards

Complies with IEC60601-1 :2006, IEC60601-1-2:2007, EN 12470-3:2000 and ASTM E 1112-00.

Specifications

Measurement Range:	89.6 °F ~ 109.4 °F (32.0 °C ~ 43.0 °C)
Accuracy:	±0.3 °F / 89.6 °F ~ 95.7 °F (±0.2 °C / 32.0 °C ~ 35.4 °C) ±0.2 °F / 95.9 °F ~ 107.6 °F (±0.1 °C / 35.5 °C ~ 42.0 °C) ±0.3 °F / 107.8 °F ~ 109.4 °F (±0.2 °C / 42.1 °C ~ 43.0 °C) (When measured at a standard room temperature of 73.4°F/23°C in the water bath)
Display Unit:	0.1 °F (0.1 °C)
Storage Conditions:	-13 °F ~ 158 °F (-25 °C ~ 70 °C) / 15% - 90% RH
Operating Conditions:	50 °F ~ 104 °F (10 °C ~ 40 °C) / 15% - 90% RH
Battery:	1.55V (LR41)
Battery Life:	Estimated 4,000 uses (more than 200 hours of continuous use)
Display:	LCD Liquid Crystal Display
Weight:	0.71 oz (20g) including battery
Dimensions:	6.1" x 1.2" x .66" (155.5mm x 32.5mm x 17mm)
Measurement Time:	Oral, Rectal, Axillary 10 seconds
Audible Alarm:	Notified beeper for ready and finished measurements The fever alarm will sound with short beeps at 100 °F (37.8 °C)
Memory:	Stores last temperature taken
Auto Off:	After 1 minute

The manufacturer recommends verifying the accuracy of the unit by an authorized laboratory every 2 years.

Limited Warranty

This product is warranted against defects in materials and workmanship under normal use and service as follows:

1. Warranty service extends to the original retail purchaser only and commences with the date of delivery.
2. Your Adimals digital thermometer is warranted for two years from date of purchase.

What Is Covered: Replacement of parts, and labor.

What Is Not Covered: Transportation charges to Service Center. Batteries where supplied. Damages caused by abuse, misuse, accident, or negligence. Incidental, special, or consequential damages. Some states do not allow the exclusion or limitation of incidental, special, or consequential damages, so this limitation may not apply to you.

To Obtain Warranty Service: Send item(s) postage paid to ADC Service Center, 55 Commerce Dr., Hauppauge, NY 11788. Please include your name and address, phone no., proof of purchase, and a brief note explaining the problem.

Implied Warranty: Any implied warranty shall be limited in duration to the terms of this warranty and in no case beyond the original selling price (except where prohibited by law). This warranty gives you specific legal rights and you may have other rights which vary from state to state.

For Australian Consumers: Our goods come with guarantees that cannot be excluded under the Australian Consumer Law. You are entitled to a replacement or refund for a major failure and compensation for any other reasonable foreseeable loss or damage. You are also entitled to have the goods repaired or replaced if the goods fail to be of acceptable quality and the failure does not amount to a major failure.



Geon Corporation
No. 12, Gung Ye Road, Hsi Hu
Chang Hwa Hsien, Taiwan

MYMSTC,SL
Avda. de los Rosales,
32, 28935 M6stoles
Madrid, Spain

Distributed by: ADC®
55 Commerce Drive
Hauppauge, NY 11788
Inspected in the U.S.A.

tel: 631-273-9600
toll free: 1-800-232-2670
fax: 631-273-9659
www.adctoday.com
email: info@adctoday.com

Made in Taiwan



Batteries and electronic devices must be disposed of in accordance with the locally applicable regulations, not with domestic waste.



Read the instruction manual carefully before using this device, especially the safety instructions, and keep the instruction manual for future use.



2460

