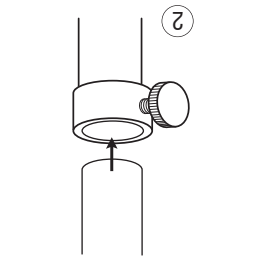
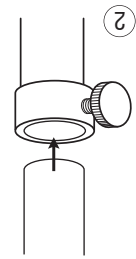


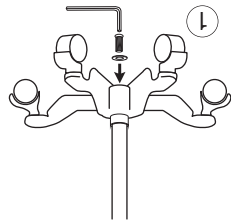
## HOW TO ASSEMBLE



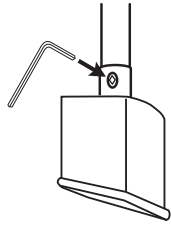
Slide inner pole inside outer pole.



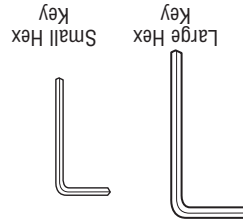
Attach main unit to cuff storage basket.



Tighten hardware as securely as possible. (Note: To prevent loosening, hardware must be tightened securely and periodically checked).

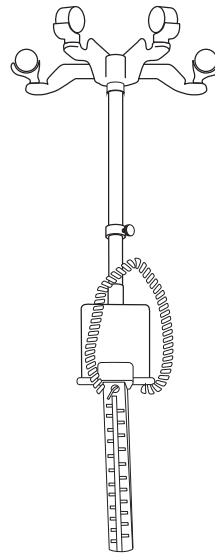


Insert pole to bottom of cuff storage basket and tighten hex bolt on side of the cuff storage basket with small hex key.



Included Tools

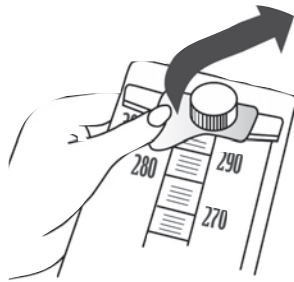
1. With base on its side connect upright outer pole to base using the long hex bolt and lock washer as shown. Tighten with large hex key provided. Note: Tighten hex bolt securely by applying as much force to hex key as possible. (Fig. 1)
2. Turn base upright and slide stainless steel inner pole inside outer pole with open end up. (Fig. 2)
3. Loosen hex bolt on collar of cuff storage basket with small hex key provided. Place cuff storage basket atop stainless steel inner pole making sure the pole goes completely inside collar and tighten hex bolt with key. (Fig. 3)
4. Attach the main unit to the cuff storage basket and secure with short hex bolt and washers as shown. (Fig. 4)
5. Adjust height of mercury unit by loosening adjusting screw and raising or lowering inner pole until mercury column is at desired height. Tighten adjusting screw by hand.
6. Carefully remove red connector cap covering reservoir connector at rear of unit. Attach the coiled tubing to reservoir connector on the back of main unit. (Note: the coiled tubing may be difficult to connect - moisten with soapy water if necessary). Connect coiled tubing to DIAGNOSTIX 972™ MERCURIAL BLOOD PRESSURE INSTRUMENT for inflation system. Refer to booklet entitled instructions on operating the unit.



## MAINTENANCE

To Lock Mercury Within the Reservoir: Tilt the entire unit back 45° towards the reservoir to permit mercury to flow out of cartridge tube and into reservoir. When cartridge tube is completely emptied of ALL mercury (and while it is still tilted 45°), move locking lever to the right "OFF". Mercury should be locked within the reservoir during maintenance or transport. To release mercury, move lever to "ON" position. If necessary, tilt unit towards tube to allow mercury to flow out of reservoir.

Lift on the spring loaded EZ-Tube™ mechanism located at the top of the instrument. Tilt instrument forward to free tube. If necessary use a small flathead screwdriver to help dislodge the top of the tube. To replace tube, lift EZ-Tube™ mechanism and insert base of tube into main unit, being sure graduation marks face out. Next, position top of tube and release EZ-Tube™ mechanism.



## DIAGNOSTIX™ 972



- Assembly Instructions
- Schematics
- Parts List

To Register Your Product, visit us at [www.adctoday.com](http://www.adctoday.com) and follow the links



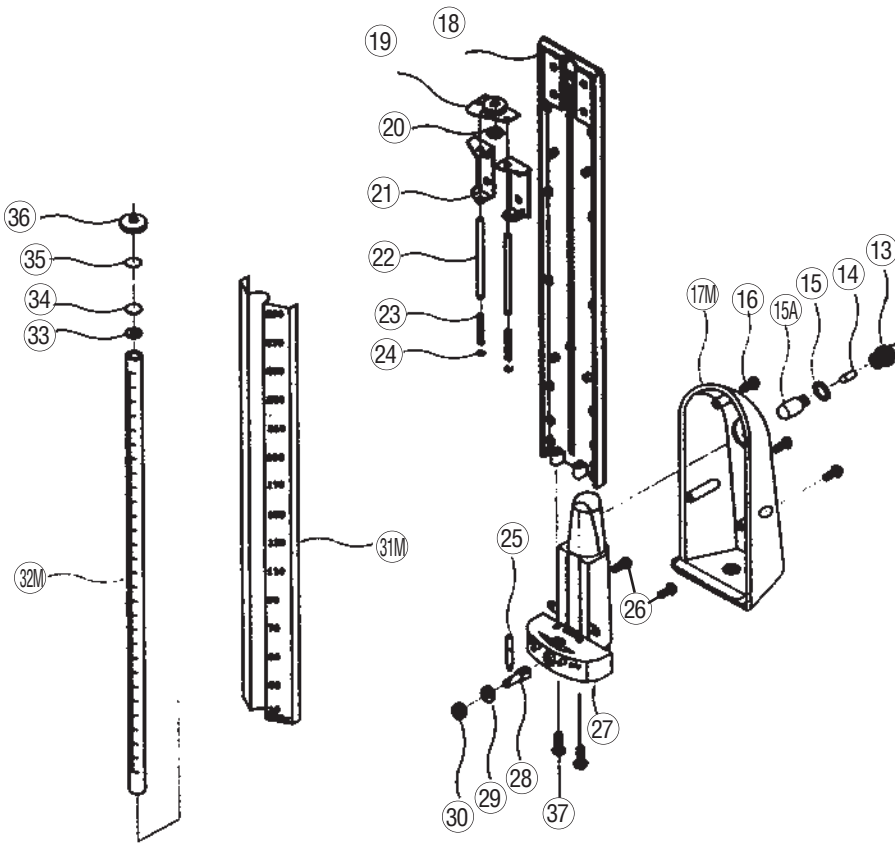
ADC  
55 Commerce Drive  
Hauppauge, NY 11788

tel: 631-273-9600, 1-800-232-2670  
fax: 631-273-9659  
[www.adctoday.com](http://www.adctoday.com)  
email: [info@adctoday.com](mailto:info@adctoday.com)



# SCHEMATIC PARTS LIST

## 972 UNIT

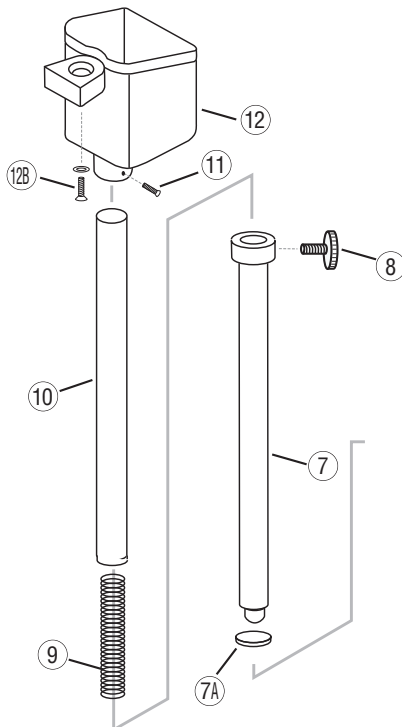


| Ref # | Item #  | Description                      |
|-------|---------|----------------------------------|
| 13    | 952-109 | Reservoir Connector              |
| 14    | 952-110 | Cotton Filter                    |
| 15    | 952-111 | Reservoir Connector Gasket       |
| 15A   | 952-112 | Reservoir Feeder Tube            |
| 16    | 952-113 | Reservoir Cover Screws (3)       |
| 17M   | 972-114 | Reservoir Cover                  |
| 18    | 952-115 | Scale Plate Holder               |
| 19    | 952-116 | Cartridge Top Plate              |
| 20    | 952-117 | Rubber Gasket                    |
| 21    | 952-118 | Reservoir Holder for Top Plate   |
| 22    | 952-119 | Rods (2)                         |
| 23    | 952-120 | Springs (2)                      |
| 24    | 952-121 | Locking Washers (2)              |
| 25    | 952-122 | Locking Lever Handle             |
| 26    | 952-123 | Reservoir Screws (2)             |
| 27    | 952-124 | Reservoir Tank                   |
| 28    | 952-125 | Reservoir Rod                    |
| 29    | 952-126 | Bushing                          |
| 30    | 952-127 | Locking Screw (1)                |
| 31M   | 972-128 | Scale Plate                      |
| 32M   | 972-129 | Graduated Plastic Cartridge Tube |
| 33    | 952-130 | Rubber Gasket                    |
| 34    | 952-132 | Filter Plug                      |
| 35    | 952-131 | Diaphragm                        |
| 36    | 952-133 | Screw Cap                        |
| 37    | 952-134 | Reservoir Base Screws (2)        |

### CONNECTING THE INFLATION SYSTEM TO MANOMETER

Remove red safety cap which seals the reservoir containing mercury. Attach free end of reservoir tube securely to air inlet. Save red safety cap for later use. When transporting mercury instrument we recommend placing the red safety cap on reservoir.

**Please Note:** it is normal for negligible amounts of residual mercury droplets to accumulate around the air inlet beneath the red safety cap during transportation.



### STAND ASSEMBLY FOR 972

| Ref # | Item #    | Description                   |
|-------|-----------|-------------------------------|
| 1     | 972-101   | Long Hex Bolt and Washer (1)  |
| 2     | 972-080   | Complete 5 Leg Base           |
| 3     | 972-106   | Casters (5)                   |
| 7     | 972-107   | Outer Pole                    |
| 7A    | 972-107A  | Rubber Gasket                 |
| 8     | 972-108   | Knob                          |
| 9     | 972-109   | Spring                        |
| 10    | 972-110   | Inner Pole                    |
| 11    | 972-111   | Tightening Device             |
| 12    | 972-112   | Cuff Storage Basket           |
| 12B   | 752-114   | Short Hex Bolt and Washer (1) |
| 3A    | 972-106-1 | Single Caster                 |
| N/A   | 972-090   | Complete Stand Assembly       |

