

- Assembly Instructions
- Schematic
- Parts List

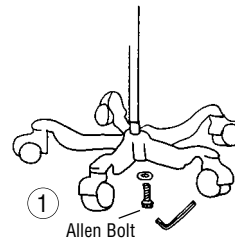
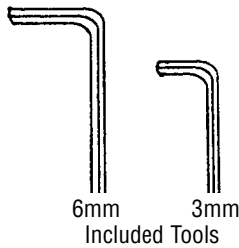


DIAGNOSTIX™ 752M

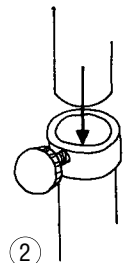
To Register Your Product, visit us at www.adctoday.com and follow the links

HOW TO ASSEMBLE

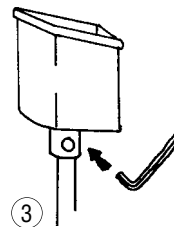
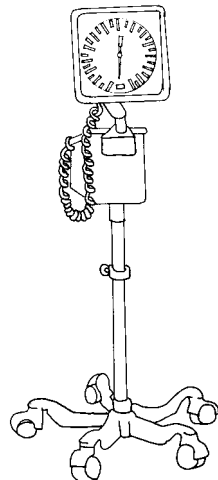
1. With base on its side connect upright outer pole to base using large (6mm) allen bolt. Tighten with large (6mm) allen key provided. Tighten hardware as securely as possible. (Note: To prevent loosening, hardware must be tightened securely and periodically checked). (Figure 1)
2. Slide stainless steel inner pole inside outer sleeve with open end up. (Figure 2)
3. Loosen (3mm) allen bolt on collar of cuff storage basket with small (3mm) allen key provided. Place cuff storage basket on top of stainless steel inner pole making sure the pole goes completely inside collar and tighten allen bolt with key. (Figure 3).
4. Attach manometer bracket to basket using (6mm) allen bolt and washers as shown. Tighten securely with large (6mm) allen key. (Figure 4).
5. Adjust height of manometer by loosening knob and raising or lowering inner pole until gauge is at desired height. Tighten knob by hand.
6. Connect coiled tubing to inflation system. (Note: The coiled tubing may be difficult to connect, moisten with soapy water if necessary). Refer to booklet entitled DIAGNOSTIX™ 752M: Use, Care and Maintenance for instructions on operating the unit.



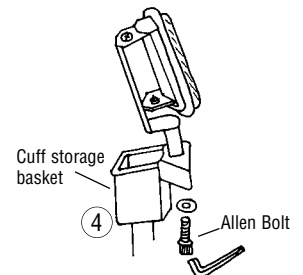
Connect outer pole (tube) to base assembly. Note: Tighten allen bolt securely by applying as much force to allen key as possible.



Slide inner pole inside outer pole.

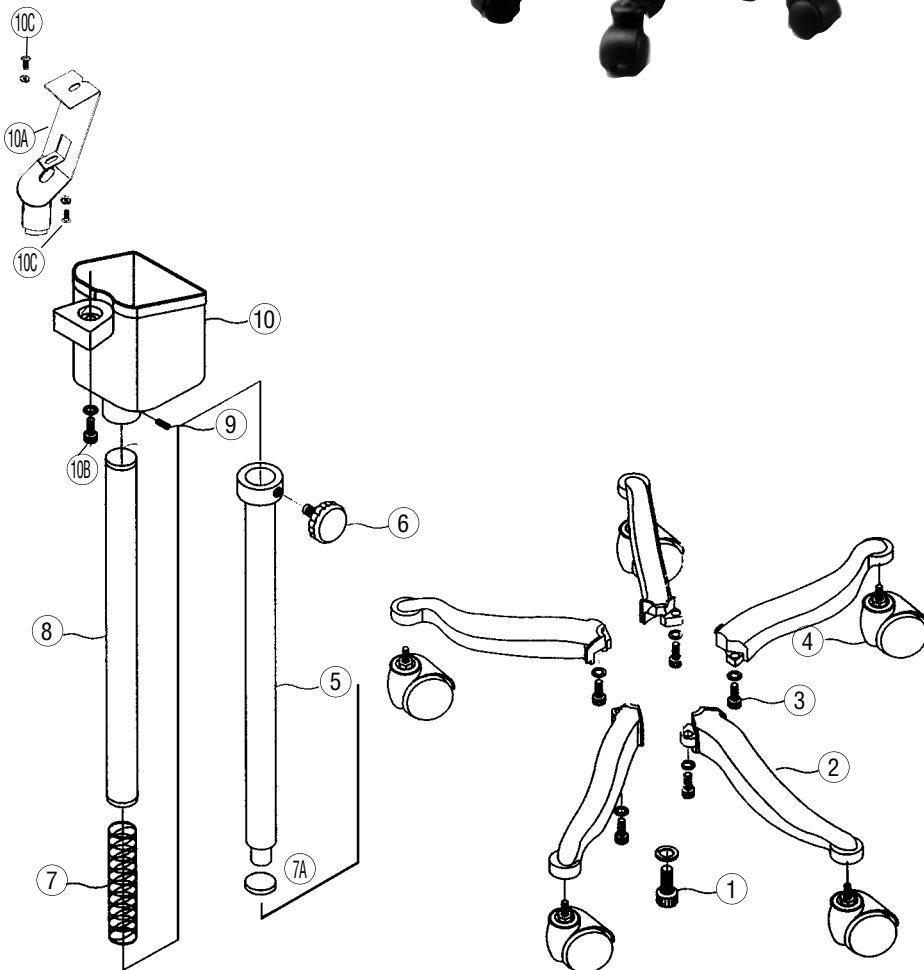


Insert pole into bottom of cuff storage basket and tighten allen bolt on side of the basket with small allen key.



Attach manometer bracket to cuff storage basket.

SCHEMATIC PARTS LIST



ROD & BASE ASSEMBLY FOR 752M

Ref #	Item #	Description
1	972-101	Center Pole Screw (1)
2	972-103	Legs (5)
3	972-104	Leg Screws (5)
4	972-106	Casters (5)
5	972-107	Outer Pole
6	972-108	Knob
7	972-109	Spring
7A	972-107A	Gasket
8	972-110	Inner Pole
9	972-111	Tightening Device
10	972-112	Basket
10A	752-113	Bracket
10B	752-114	Manometer Mounting Hardware
10C	752-115	Manometer Bracket Hardware
N/A	972-080	Complete 5 Leg Base
N/A	972-106-1	Single Caster